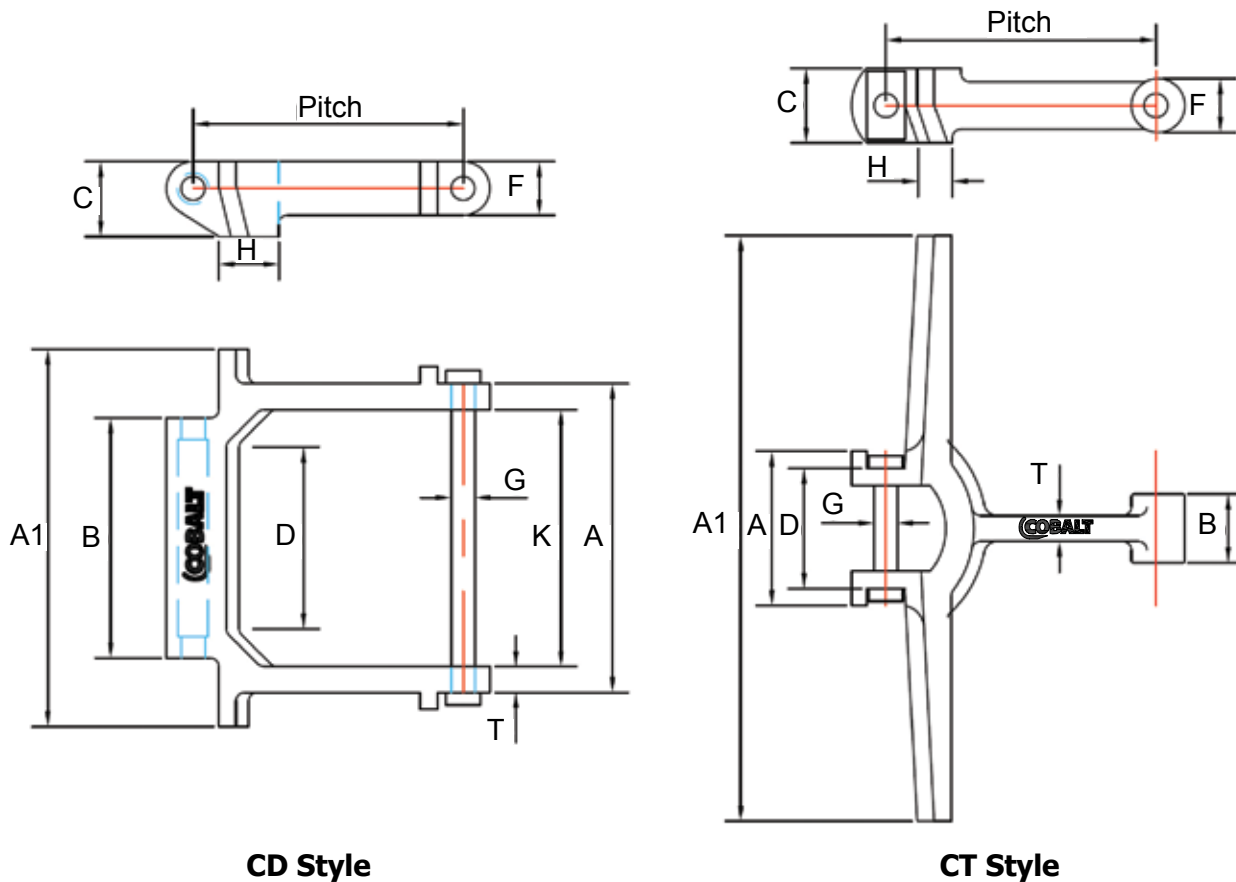


Cast Link Chains



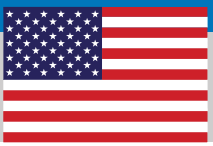
CAST LINK DRAG CHAINS



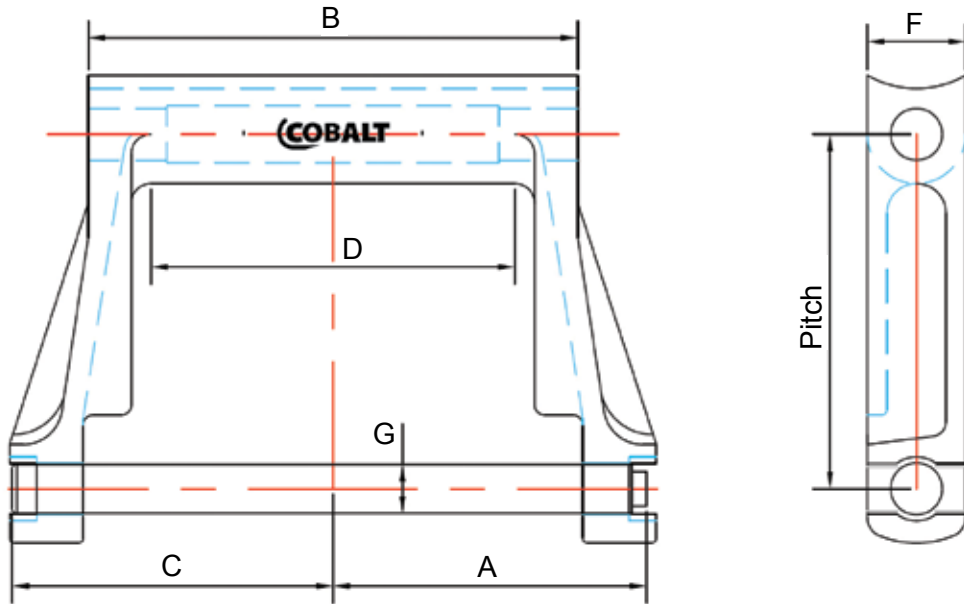
CD Style

CT Style

European Standard Cast Link Drag Chain (CD)																										
Chain	Pitch		Width		Over Flight		Length of Bearing		Sidebar Thickness		Sidebar Height		Overall Height		Pin Dia		Gearing Width		H		Minimum Ultimate Strength		Rated Working Load		Weight	
	in	mm	in	mm	in	mm	in	mm	in	mm	in	mm	in	mm	in	mm	in	mm	in	mm	lbs	Kg	lbs	Kg	lbs/ft	kgs/mtr
CT200/50/300	7.875	200	4.00	100.00	11.81	300.00	2.00	50.00	0.56	14.00	1.25	40.00	1.75	44.00	0.69	183.00	0.13	80.00	1.00	25.00	28,000	12,700	4,100	1,860	10.75	16.00
CD200/220/T250	7.875	200	8.63	225.00	9.84	250.00	7.06	180.00	0.75	20.00	1.56	40.00	2.19	55.00	0.69	184.00	0.94	125.00	7.06	180.00	62,500	28,400	9,300	4,230	16.65	24.80
CD200/220/T300	7.875	200	8.63	225.00	11.81	300.00	7.06	180.00	0.75	20.00	1.56	40.00	2.19	55.00	0.69	184.00	0.94	125.00	7.06	180.00	62,500	28,400	9,300	4,230	19.32	28.80
CD200/220/T450	7.875	200	8.63	225.00	17.72	450.00	7.06	180.00	0.75	20.00	1.56	40.00	2.19	55.00	0.69	184.00	0.94	125.00	7.06	180.00	62,500	28,400	9,300	4,230	21.43	31.95
CD200/220/T600	7.875	200	8.63	225.00	23.63	600.00	7.06	180.00	0.75	20.00	1.56	40.00	2.19	55.00	0.69	184.00	0.94	125.00	7.06	180.00	62,500	28,400	9,300	4,230	24.15	36.00
CD200/285/T450	7.875	200	11.25	285.00	17.72	450.00	8.69	220.00	1.19	30.00	1.97	50.00	2.56	65.00	1.00	25.00	6.50	165.00	8.63	225.00	129,500	58,900	16,000	7,270	31.85	47.50
CD200/285/T500	7.875	200	11.25	285.00	19.69	500.00	8.69	220.00	1.19	30.00	1.97	50.00	2.56	65.00	1.00	25.00	6.50	165.00	8.63	225.00	129,500	58,900	16,000	7,270	33.47	49.90
CD200/285/T600	7.875	200	11.25	285.00	23.63	600.00	8.69	220.00	1.19	30.00	1.97	50.00	2.56	65.00	1.00	25.00	6.50	165.00	8.63	225.00	129,500	58,900	16,000	7,270	35.05	52.25
CD300/460/T500	11.813	300	18.31	465.00	19.69	500.00	14.97	380.00	1.56	40.00	2.75	70.00	3.34	85.00	1.44	36.00	12.81	325.00	14.97	380.00	282,000	128,180	35,700	16,230	55.22	82.00
CD300/460/T600	11.813	300	18.31	465.00	23.63	600.00	14.97	380.00	1.56	40.00	2.75	70.00	3.34	85.00	1.44	36.00	12.81	325.00	14.97	380.00	282,000	128,180	35,700	16,230	60.02	89.48
CD300/460/T800	11.813	300	18.31	465.00	31.50	800.00	14.97	380.00	1.56	40.00	2.75	70.00	3.34	85.00	1.44	36.00	12.06	325.00	14.97	380.00	282,000	128,180	35,700	16,230	64.10	95.57
CD400/690/T900	15.750	400	27.19	690.00	31.50	800.00	22.81	580.00	2.19	55.00	4.13	105.00	5.31	135.00	1.75	45.00	20.69	525.00	22.81	580.00	338,700	153,950	42,900	19,500	78.70	117.33

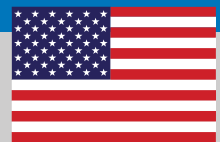


CAST LINK DRAG CHAINS

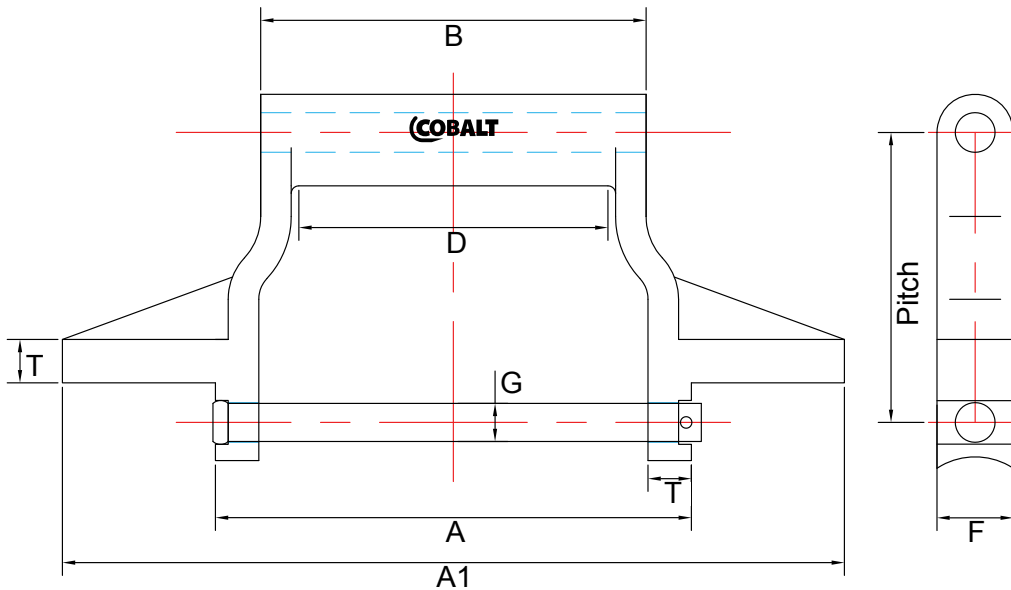


American Standard SD Type Cast Link Drag Chain

Chain	Pitch		Rated Working Load		End Pin to C/L A		Head Pin to C/L C		Length of Bearing B		Sidebar Height F		Pin Dia G		Gearing Width D		Minimum Ultimate Strength		Weight	
	in	mm	lbs	kg	in	mm	in	mm	in	mm	in	mm	in	mm	in	mm	lbs	kg	lbs/ft	kgs/mtr
CSD21	9.000	228.60	23,400	10,600	8.31	211.14	8.19	207.96	12.44	315.91	2.50	63.50	1.25	31.75	9.50	241.30	182,300	82,850	46.80	69.80
CSD23	9.000	228.60	23,400	10,600	6.00	152.40	6.00	152.40	8.44	214.31	2.50	63.50	1.25	31.75	5.75	146.05	172,800	78,550	41.80	62.30
CSD27	9.000	228.60	20,100	9,150	5.06	128.59	4.94	122.24	6.88	174.63	2.50	63.50	1.13	28.58	4.25	107.95	160,500	72,950	30.70	45.80
CSD28	9.000	228.60	17,600	8,000	8.13	206.38	8.00	203.20	12.81	325.44	2.13	53.98	0.88	22.22	10.13	257.18	139,400	63,360	26.00	38.80
CSD29	9.000	228.60	17,600	8,000	6.13	155.58	6.00	152.40	8.81	223.84	2.13	53.98	0.88	22.22	6.25	158.75	139,400	63,360	20.80	31.01

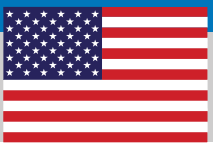


CAST LINK DRAG CHAINS

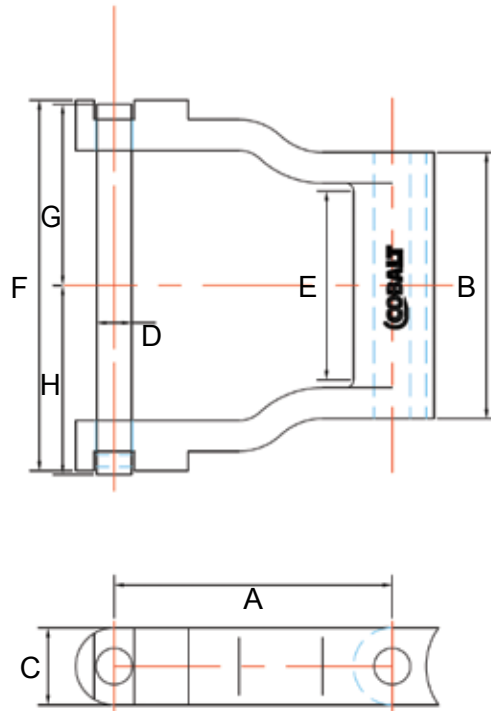


American Standard S Type Cast Link Drag Chain

Chain	Pitch		Width		Over Flight		Length of Bearing		Sidebar Thickness		Sidebar Height		Pin Dia		Gearing Width		Rated Working Load		Minimum Ultimate Strength		Weight	
			A	A1	A1	A1	B	B	T	T	F	F	G	G	D	D						
	in	mm	in	mm	in	mm	in	mm	in	mm	in	mm	in	mm	in	mm	lbs	kg	lbs	kg	lbs/ft	kg/Mtr
CS5157	6.060	153.92	6.94	176.28	8.14	203.36	4.63	117.60	0.63	15.88	2.50	63.50	1.13	28.58	2.75	69.85	18,200	8,300	144,600	65,730	25.31	37.46
CS5121	9.000	228.60	9.75	247.65	10.30	254.76	6.31	160.27	1.13	28.58	2.50	63.50	1.25	31.75	3.63	92.09	27,600	12,550	218,450	99,290	40.47	60.70
CS6121	9.000	228.60	9.75	247.65	10.30	254.76	6.31	160.27	1.13	28.58	2.50	63.50	1.25	31.75	3.63	92.09	27,600	12,550	218,450	99,290	40.47	60.70
CS6067	9.000	228.60	8.50	215.90	10.26	254.66	5.56	141.22	1.13	28.58	2.50	63.50	1.25	31.75	3.63	92.09	24,320	11,050	178,800	81,270	29.43	44.65



CAST HD CHAINS

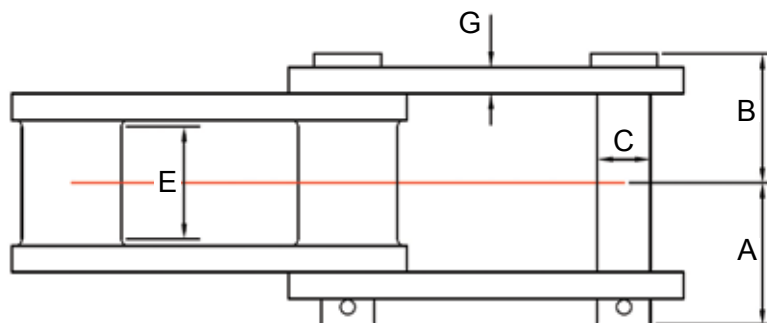
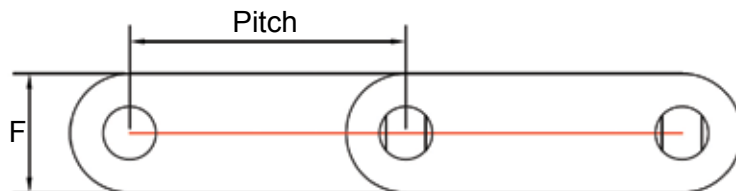


Cast HD Chains													
Chain	Style	Pitch	Barrel Length	Sidebar Width	Pin Dia	Max Sprkt. Width	Max O.A. Width	Pin Head to CL	Pin Head to CL	Recom. Working load	Wt. per Pin	Average Ultimate Strength	Weight
		A	B	C	D	E	F	G	H				
		in											
C1924	1	5.000	7.63	1.63	0.75	6.00	10.13	4.69	5.06	7,800	0.90	62,000	19.40
C1932	1	6.000	5.25	2.00	1.00	3.75	8.00	4.00	4.00	16,000	1.00	125,900	24.20
C1934	2	6.000	5.31	1.56	0.75	4.13	7.50	3.69	3.81	9,300	2.00	73,850	15.20
C1952	1	9.000	5.13	2.50	1.13	3.00	9.00	4.25	4.63	26,800	2.50	211,700	27.50
C1953	1	9.000	6.88	2.50	1.13	4.75	10.00	4.81	5.00	20,100	3.00	158,800	30.80
C1955	1	9.000	8.50	2.50	1.13	5.75	12.00	5.78	5.97	23,500	3.00	185,200	36.10
C1958	1	9.000	8.50	2.50	1.25	5.75	12.00	5.78	5.97	23,400	4.50	167,900	39.50
C1960	1	9.000	9.25	2.50	1.25	6.50	14.00	6.75	7.13	33,300	4.30	262,600	45.90
C1962	1	9.000	12.44	2.50	1.25	10.25	16.38	7.84	8.34	23,400	5.90	182,300	46.80
C1964	1	9.000	12.69	2.50	1.25	10.00	18.00	8.72	9.03	35,700	6.00	282,000	52.20
C1965	2	9.000	12.44	2.50	1.25	10.25	18.38	7.84	8.34	23,400	6.00	182,300	50.10
C1967	2	9.000	12.69	2.50	1.25	10.00	20.00	8.72	9.03	35,700	6.00	282,000	55.50
C1972	1	12.000	17.88	2.75	1.38	14.38	24.00	11.38	11.88	42,900	10.00	338,700	63.20
C1976	2	12.000	17.88	2.75	1.38	14.38	26.00	11.38	11.88	42,900	10.00	338,700	70.20



COMBINATION CHAINS

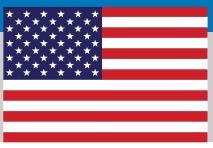
Cobalt Chains premium combination chains are most commonly used in light-to-medium duty conveying applications where a durable yet cost effective chain is needed. Combination chains are often utilized for stone, gravel, coal and other abrasive materials. They are manufactured with hardened cast block links and heat-treated steel sidebars and pins to withstand the abuse of industrial applications. Our combination chains are designed and fully tested for dimensional consistency, interchangeability, and correct sprocket engagement.



Combination Chains																			
Chain	Pitch		A		B		C		E		F		G		No. of Links in 10ft.	Minimum Ultimate Strength		Weight	
	in	mm	in	mm	in	mm	in	mm	in	mm	in	mm	in	mm		lbs	kg	lbs/ft	kg/mtr
CC55	1.631	41.43	0.41	10.32	1.09	27.78	0.38	9.50	0.69	17.46	0.75	19.05	0.19	4.76	74.00	9,000	4,000	2.20	3.28
CC102	4.000	101.60	2.13	53.98	2.25	57.15	0.63	15.88	1.88	47.63	1.50	38.10	0.38	9.50	30.00	24,000	11,900	7.50	11.15
CC110	6.000	152.40	2.06	52.39	2.19	55.56	0.63	15.88	1.88	47.63	1.50	38.10	0.38	9.50	20.00	24,000	11,900	5.90	8.79
CC111	4.760	121.90	2.38	60.33	2.63	66.68	0.75	19.05	2.13	53.98	1.75	44.45	0.38	9.50	24.00	36,000	16,400	9.30	13.87
CC131	3.075	78.10	1.69	42.86	1.94	49.20	0.63	15.88	1.13	28.58	1.50	38.10	0.38	9.50	39.00	24,000	11,900	6.70	10.00
CC132	6.060	153.92	3.19	81.00	3.25	82.55	1.00	25.40	3.13	79.38	2.00	50.80	0.50	12.70	20.00	50,000	22,700	13.10	19.52
CC188	2.609	66.27	1.25	31.75	1.38	34.93	0.50	12.07	0.88	22.22	1.13	28.58	0.25	6.35	46.00	14,000	6,960	3.50	5.22

The tabular dimensions and weights are approximate and are not binding. Design improvements may result in variations from the published figures and verification is recommended.





KILN HEAT RECOVERY CHAINS



Length to Customer Specification



Material & Heat Treatment

- BS 970 Part 4 Stainless Steel Grade 352S54 Type Cr Mn Ni 2 1/4N+Nb S Bearing
- Austenitic Stainless Steel (20-23% Cr, 3-5% Ni, 7-10% Mn, Max)
- Ambient to 960°C to 1030°C Metal Temperature (1750°F to 1900°F)
- Other steel compositions available including ferritic steels, austenitic Cr-Ni steels, and austenitic manganese steel.

